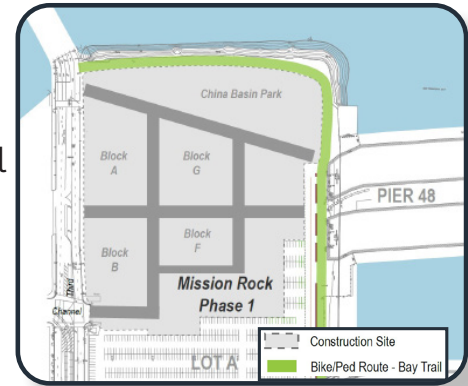


COMMUNITY UPDATE

August 2022

@ **MISSION ROCK**

Mission Rock is a 13-year culmination of community input and city planning to transform Parking Lot A into an exciting waterfront, mixed-use neighborhood. Phase one construction, currently underway, includes two residential and two office buildings, ground floor retail, and a major five-acre waterfront park on the northern end of the site.



We are pleased to present you with project updates.

Construction Updates

THE CANYON

Construction continues at The Canyon with window installations and interior build-out.



VISA

Interior build-out continues.



PARCEL B

The tower crane was dismantled this month and interior build-out work is taking place.



PARCEL F

Excavation and rebar work continues in preparation to construct the mat foundation.

Photos of the Visa building and Parcels B and F taken by Barry Fleisher

General construction can occur during the hours of 7 a.m. to 8 p.m., seven days a week, including holidays.

The Mission Rock team continues to work closely with noise and vibration consultants, neighbors and stakeholders during on-site activities. Please contact the team if you have questions or observations.

Email: info@missionrock.com | Neighborhood Construction Hotline: (415) 972-1744

Construction Website: www.buildmissionrock.com

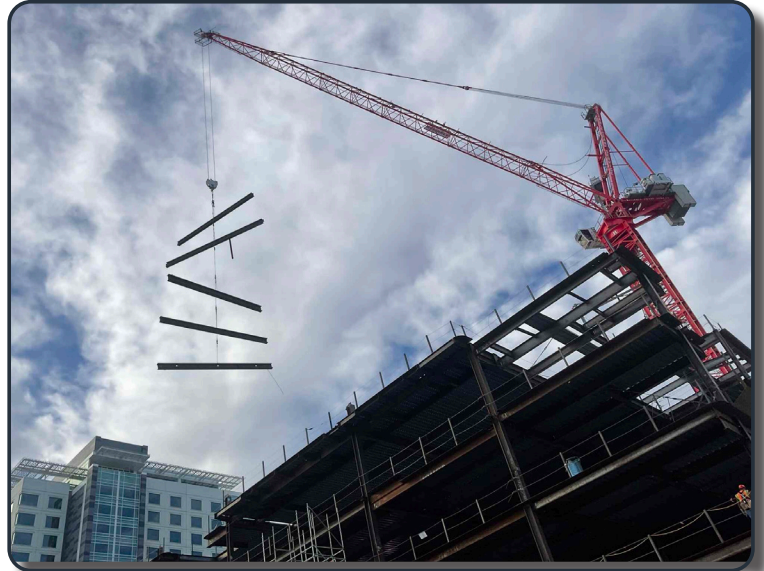
Tower Crane Dismantle at Parcel B

Parcel B's tower crane, known as a Wollfcran 1250b crane, was recently dismantled. The main functions of the crane were to erect the structural steel and the exterior precast panels. It has a 60 ton capacity at a height of approximately 132 feet. At Parcel B the crane needed to be at a height of 148 feet, which set the weight capacity to 40 tons. These limits are determined based on the location of the jib (the operating arm), the jib's length, and crane pick location. Construction activities at Parcel B continues with the exterior terraces and interior build-out.

Parcel B Fun Facts

Structural Steel

- 3,315 total tonnage (over 6.6 million pounds)
- 3,500 total pieces were erected by the tower crane
- Over 28,000 bolts were installed
- The heaviest steel column weighs 6,300 pounds



Exterior Precast Panels

- Total of 328 precast panels
- The total weight of an individual single, double, and triple window panel ranges from 14,000 - 34,000 pounds. This weight is comprised of the panel, window, glazing, and steel wire

Mission Rock Values Statement and Community Pillars

Mission Rock is a shared dream of what a neighborhood means: welcoming to all, a launchpad for opportunity and innovation, a vision of connectivity, and a place where breathtaking architecture and design inspire unique social experiences. Our Community Pillars state the foundation of our commitments to each other, to the surrounding community, to this new neighborhood we are building together, and to the people who will make Mission Rock their home, their workspace, and their place of recreation.



Building
Sustainability



Fostering Health
& Wellbeing



Advancing
Economic Vitality



Creating
Connections

Stay safe and healthy,
The Mission Rock team